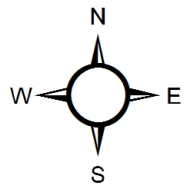


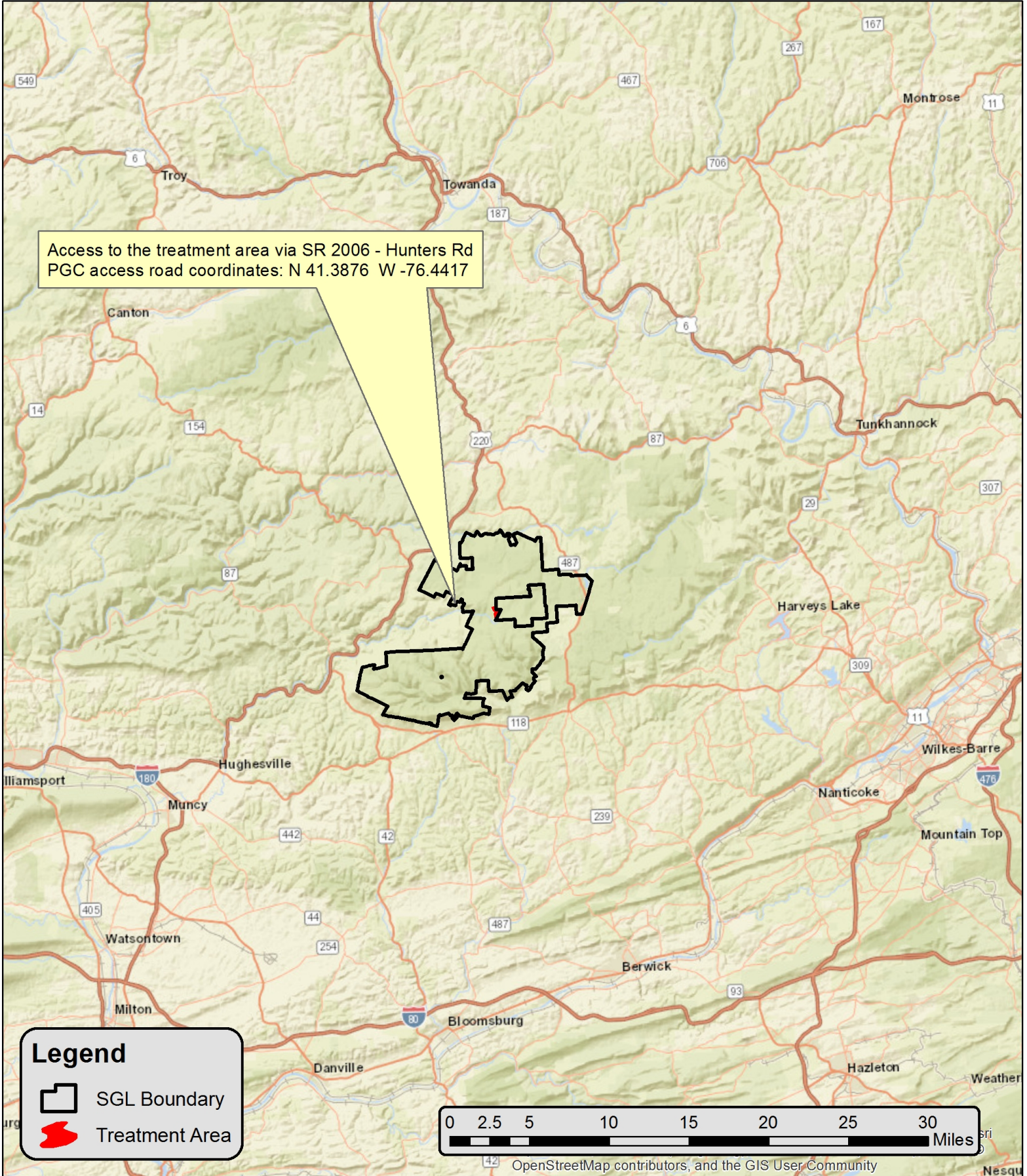
Block 1 - 143 acres

Location Map
Robinson Road Stem Herbicide
Project # 013-2019-03
State Game Lands 013
Sullivan County - LaporteTwp



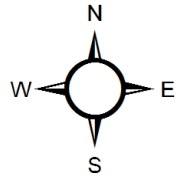
1 inch = 41,667 feet

Forester: Brian Williamson



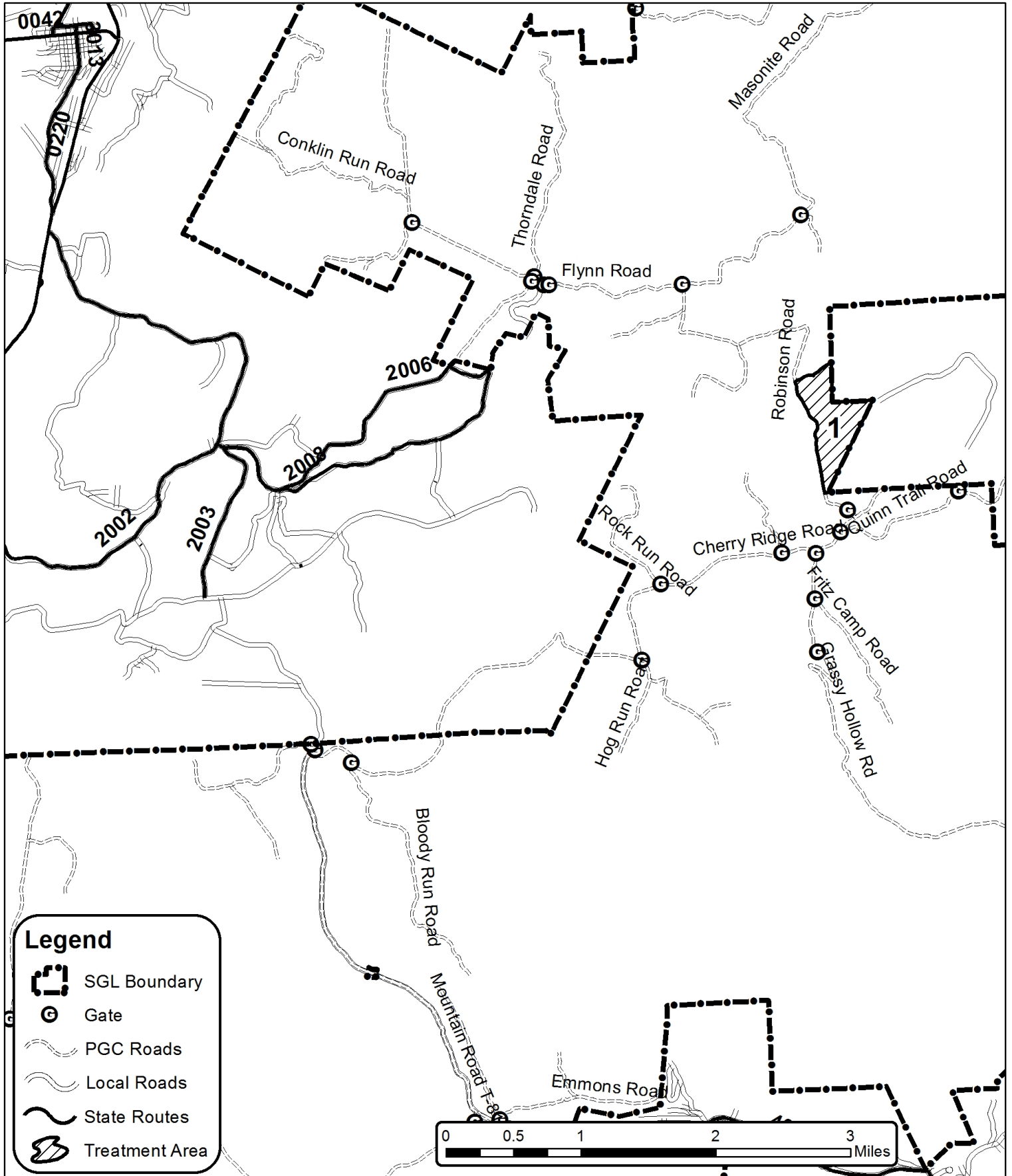
Block 1 - 143 acres

Zoomed Location Map
Robinson Road
Stem Herbicide
Project # 013-2019-03
State Game Lands 013
Sullivan County - LaporteTwp

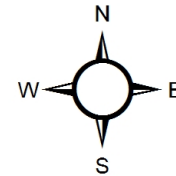


1 inch = 1 miles

Forester: Brian Williamson



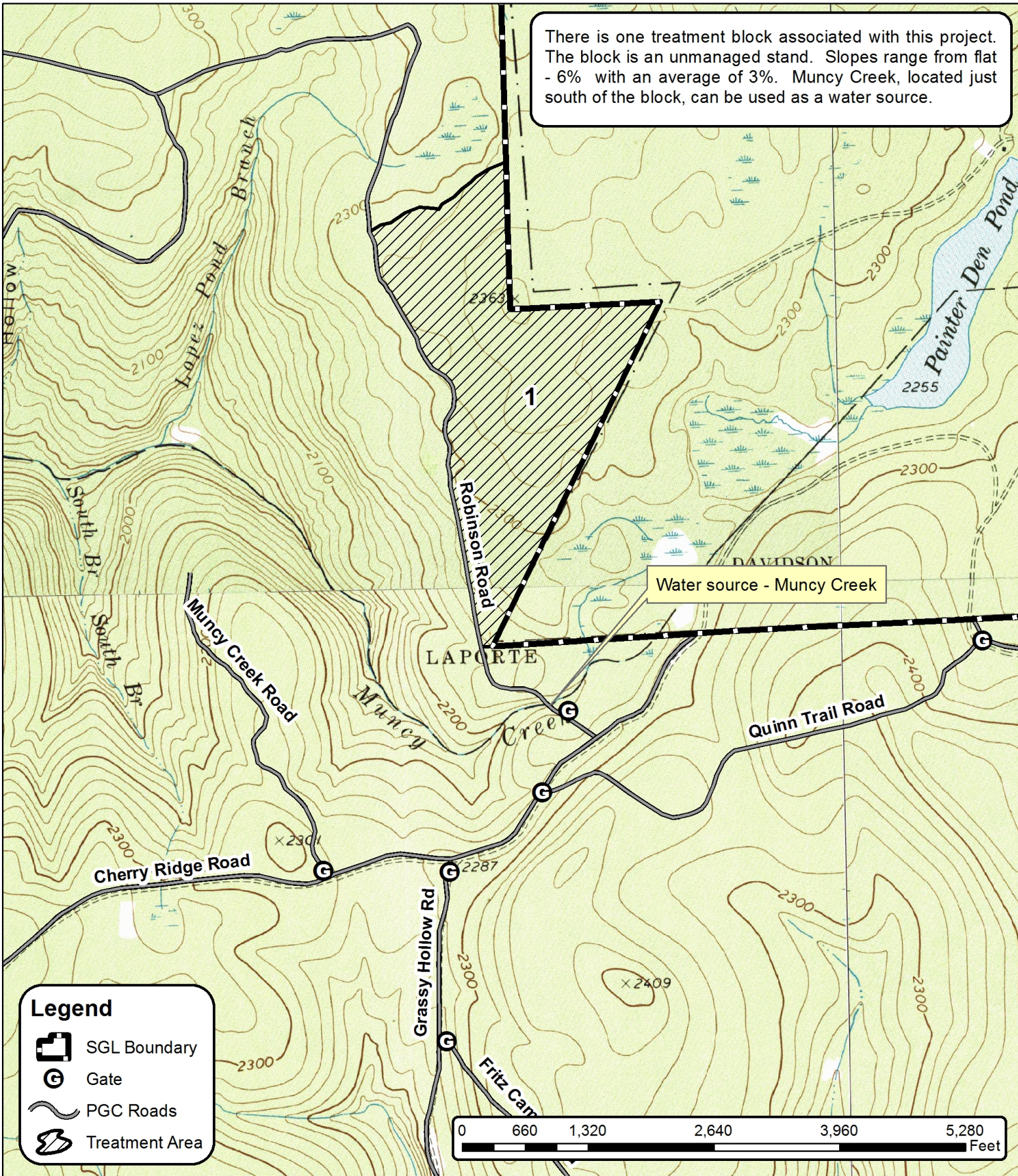
Robinson Road
Stem Herbicide
Project # 013-2019-03
State Game Lands 013
Sullivan County - LaporteTwp



1 inch = 1,320 feet

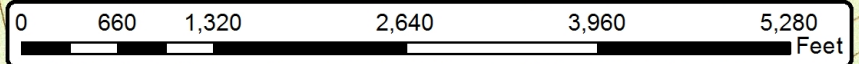
Forester: Brian Williamson

There is one treatment block associated with this project. The block is an unmanaged stand. Slopes range from flat - 6% with an average of 3%. Muncy Creek, located just south of the block, can be used as a water source.



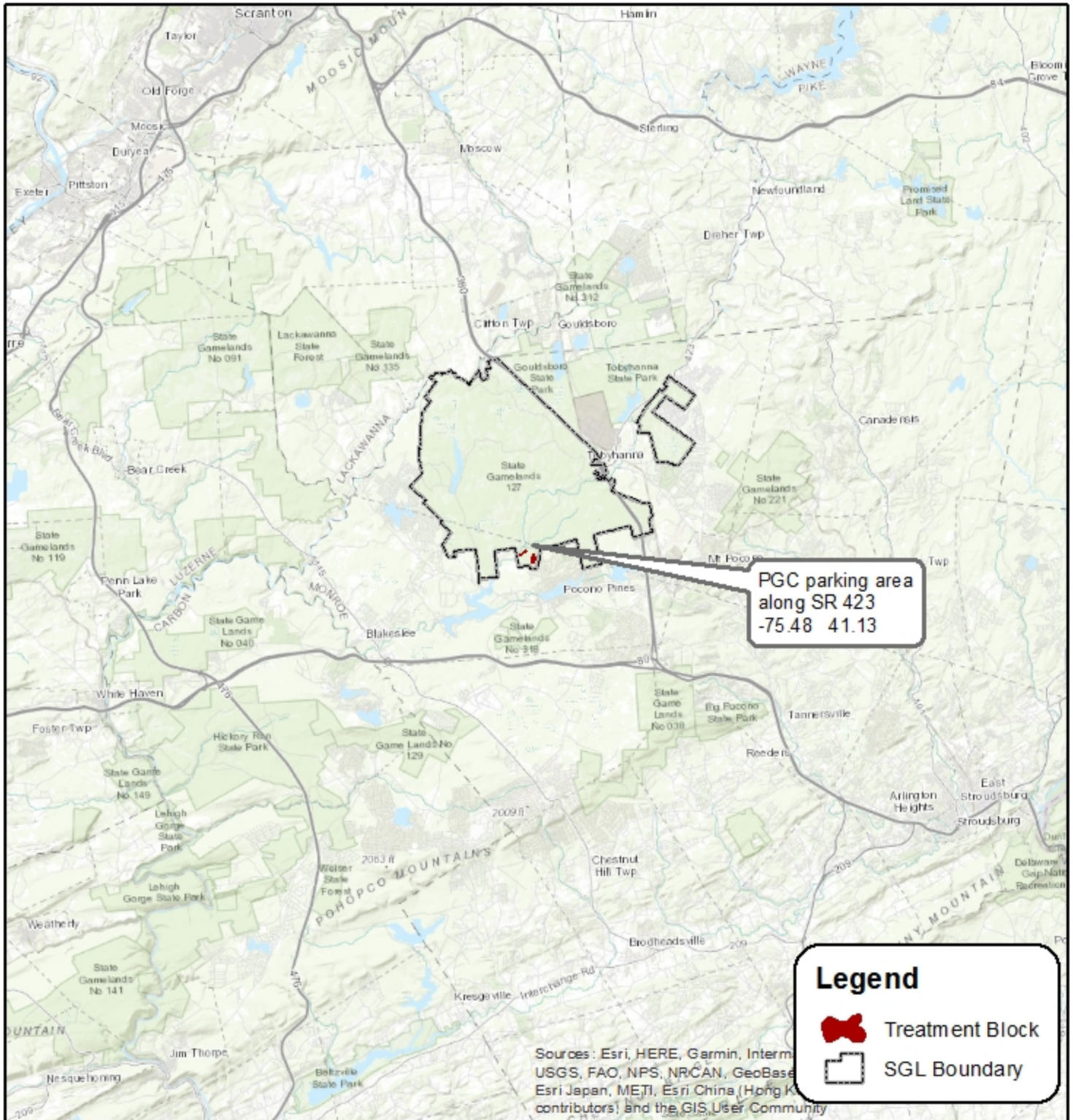
Legend

- SGL Boundary
- Gate
- PGC Roads
- Treatment Area



SGL 127
Monroe County
Tobyhanna Township

Lake Naomi Stem Herbicide Location Map 127-2019-02

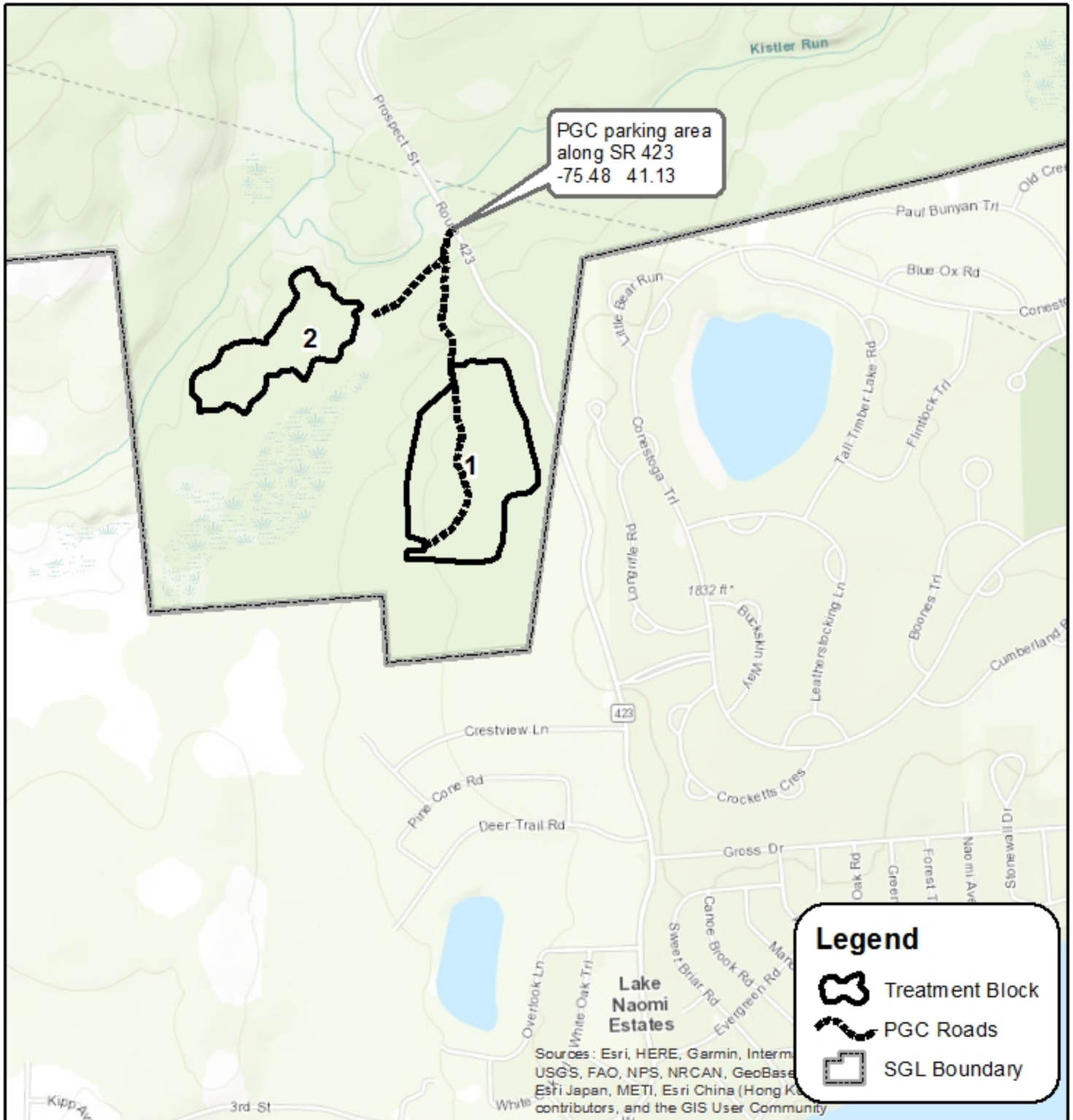


Sources: Esri, HERE, Garmin, Intermap, USGS, FAO, NPS, NRCAN, GeoBase, Esri Japan, METI, Esri China (Hong Kong), Swisstopo, Swisstopo, contributors, and the GIS User Community

SGL 127
Monroe County
Tobyhanna Township
Compartment 3
Stands 14 & 35

Lake Naomi Stem Herbicide Treatment Map 127-2019-02

Block 1: 40 acres
Block 2: 20 acres
Total: 60 acres



0 1,320 2,640 5,280 Feet

